

3:00 PM Tuesday, December 18, 2007 – International Ballroom

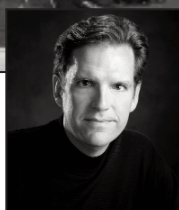
## *Flower Mound High School Chamber Orchestra*

*Flower Mound, Texas*

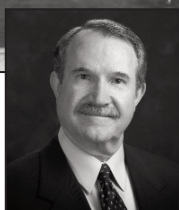
**Todd Berridge, Conductor**



**Todd Berridge**  
Conductor



**Gary Lewis**  
Guest Conductor



**Charles E. Nail**  
Guest Conductor



**Sarah Sproul**  
Guest Conductor



**Reneè Skerik**  
Viola Soloist

<b>Title</b>	<b>Composer/Arranger</b>	<b>Publisher/Distributor</b>	<b>Year</b>	<b>Grade</b>	<b>Time</b>	<b>Price</b>
Symphony No. 25 I. Allegro	W. A. Mozart/Thomas LaJoie	Kjos	2006	5	7:30	\$45.00
Hotaru Koi (Come, Firefly, Come)	Japanese Folk Song/Keiko Yamada	Carl Fischer	2007	1	2:20	38.00
Elegy for String Orchestra, Op. 58	Edward Elgar	Luck's	1909	6	4:30	18.75
	<i>Gary Lewis, Conductor, Director of Orchestral Activities, Texas Tech University</i>					
Three Tunes from the British Isles I. Country Gardens II. Lilliburlero III. Trumpet Tune	Kathy L. Fishburn	Wingert-Jones	2007	2	4:10	45.00
Eight Organ Preludes and Fugues I. C Major	J.S. Bach/Isidore Russ	Kalmus	1951	4	4:40	44.95
	<i>Charles E. Nail, Conductor, Director of Bands, Odessa College</i>					
Trauermusik – Music of Mourning I. Langsam II. Ruhig bewegt III. Lebhaft IV. Chorale, Für deinen Thron tret ich hiermit	Paul Hindemith	Schott/Hal Leonard	1936	6	9:45	16.95
	<i>Reneè Skerik, Viola, Professor of Viola, Texas Tech University</i>					
Dia de los Muertos (Day of the Dead)	Richard Meyer	Highland/Etling/Alfred	2005	3	5:45	45.00
	<i>Sarah Sproul, Conductor, Director of Orchestras, Shadow Ridge Middle School</i>					
Fiddle O' Finnigan	Keith Sharp	FJH	2007	2	2:10	45.00
Ashokan Farewell	Jay Ungar/Calvin Custer	Belwin/Alfred	1983	3	3:30	45.00